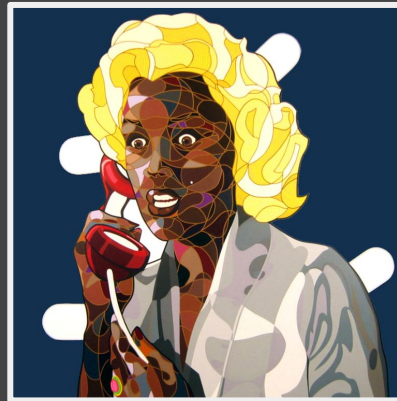




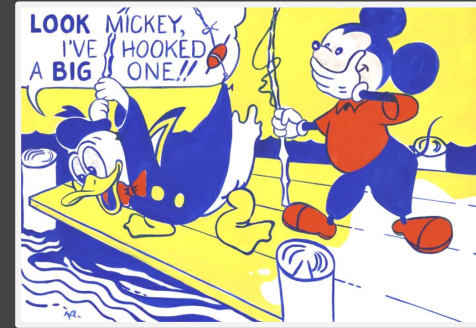
Oh, Jeff...I Love You, Too...But...,  
Roy Lichtenstein, 1964



End Freeway, Reginald Baylor, 2010



Black and Blonde Paper Doll,  
Reginald Baylor, 2009



Look Mickey, Roy Lichtenstein, 1961

# Comparative Study

Jennifer Saucedo

This comparative study is meant to investigate and elaborate the formal qualities of two artists that uniquely incorporate similar attributes to their own artworks. Through this study, the works of contemporary artist Reginald Baylor from Milwaukee will be compared with those of renowned pop artist Roy Lichtenstein. Although both artists create art with very different intentions and purposes, both bare similarities in the manner that their work is presented as well as the inspiration behind their pieces. Roy Lichtenstein and Reginald Baylor are best known for being avant garde and innovative as they demonstrate the unusual art qualities that break away from traditional art and demonstrate a personal stylization as well as blatant connections to pop culture. Both relay similar components through their work and have captivated audiences as pop sensations of the art world with their pioneering techniques and styles.

# Cultural Significance of Roy Lichtenstein



Although Lichtenstein was very heavily criticized, and was once considered the worst artist in the U.S, he became one of the most iconic pop artists in history. Creating whimsical paintings based on cartoons, his pieces added a commercial twist to traditional visual art.

His works incorporated many untraditional art subjects that were deemed unfitting and unusual. His signature art techniques involved turning images and scenes from popular culture into art and centering cartoons and commercial products as the main focus of his pieces.

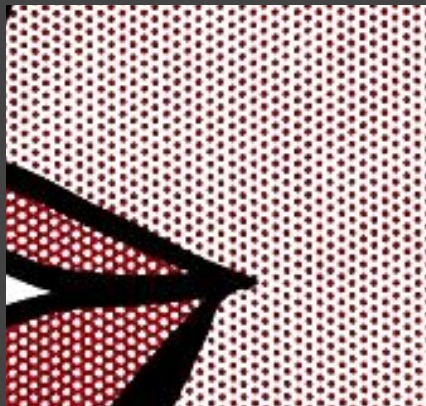
Throughout his career, Lichtenstein's art gradually became more complex, exhibiting abstract and simplistic designs and sculptures. Later on in his career as, his art began to focus more on shape and meaning, being reminiscent of the artworks of Pablo Picasso.

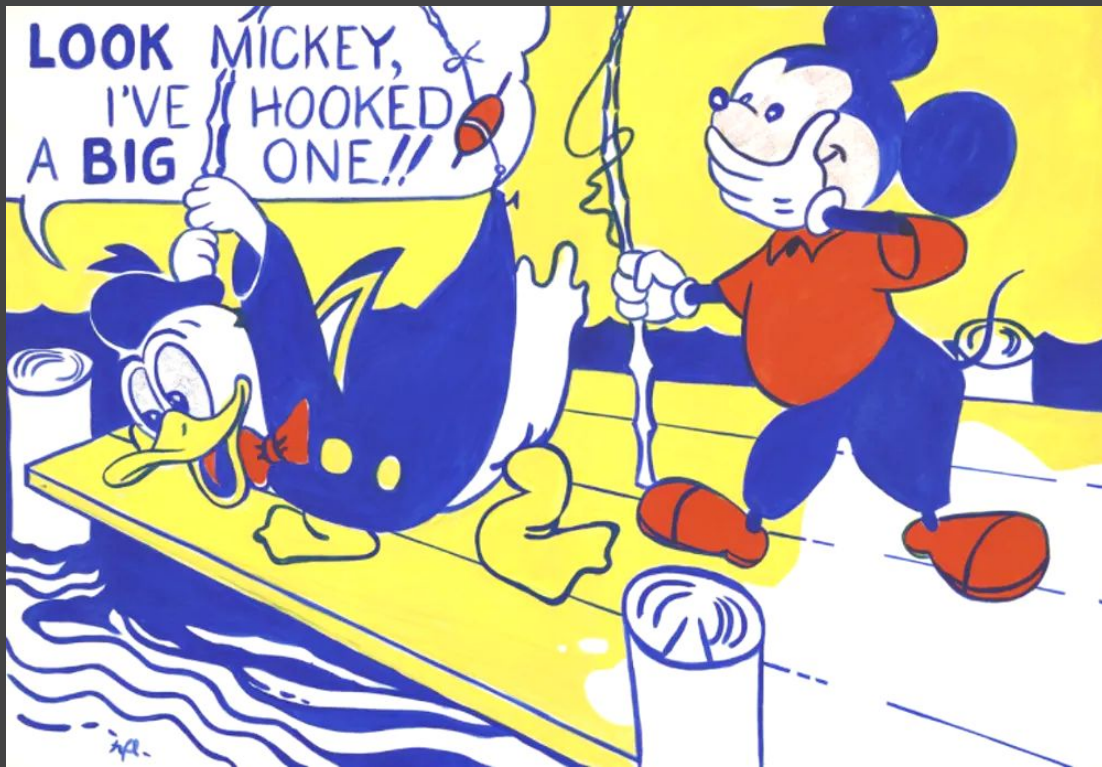
# Analysis: *Oh Jeff I Love You Too But*

Once again, Lichtenstein's artwork focuses on scenes from comic books and abstract depictions of his subjects. In *Oh Jeff I love You Too But*, and in many of Lichtenstein's works, the subject is a blonde, blue eyed girl with a sad, melodramatic disposition. Lichtenstein uses the iconic ben day dots and a speech balloon to enhance it's comic book-like qualities.

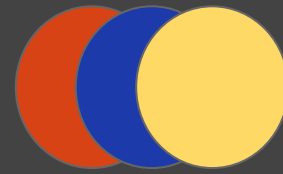
The piece serves as one of Lichtenstein's earliest works having to do with romance and featuring a style that was inspired by cartoons and advertisements.

Evidently, the format in which the female figure appears is positioned in a way that allows the hair to drape around the border of the painting. The distinct design for the hair contrasts greatly with the design qualities present in the eyes and skin tone. Lichtenstein uses thick defined lines along with a solid yellow hue for the hair, while other features incorporate ben day dots.





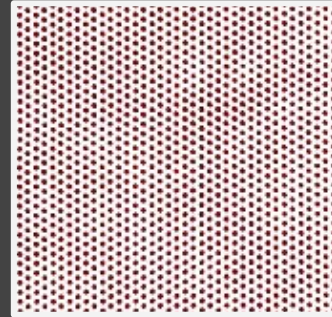
## **Analysis: *Look Mickey***



Like many other American painters during 1960's, Lichtenstein was drawn to the comic book stylization that he presented in pieces such as *Look Mickey*. *Look Mickey* depicts a scene from a popular children's book from the 1960's titled *Donald Duck and the Lost Treasure* by Carl Buettnner. This piece served as one of Lichtenstein's earliest works to exhibit his abstract and iconic cartoon style. In this particular piece, Lichtenstein experimented with colorization to distort and manipulate the original scene. What was most notable about the piece was the subject matter and the blatant incorporation of iconic cartoon character, Mickey Mouse. Many compared Lichtenstein's art to that of Willem De Kooning and Andy Warhol. De Kooning being an abstract expressionist and Warhol being a pop artist, Lichtenstein masterfully combines styles from both art movements in his earlier, comic book based pieces.

# Formal Qualities of Roy Lichtenstein

Lichtenstein uses very thick, bold lines to create texture, space and movement. Thick lines are prominent throughout many of his pieces based off of cartoons and advertisement. Lichtenstein incorporates repetition to create very discreet patterns as part of his design methods. The use of repetition is evident from the abundance of ben day dots exhibited in his pieces. It is typically used to create color in skin tones, and other human features such as eyes, lips and hair. When it comes to colorization, Lichtenstein tends to use very vibrant colors in his pieces, mostly consisting of primary colors as well as black and white. His color palettes for each of his pieces also tend to be very reminiscent of old cartoons and colors used in advertisement. This again, exemplifies the commercial and “pop” aspect of his art. Speech balloons, as well as references to pop culture are also consistent throughout his artwork, making him one of the few artists to do so during the 1960’s. Lichtenstein gained publicity by showcasing these unique yet odd stylistic choices.



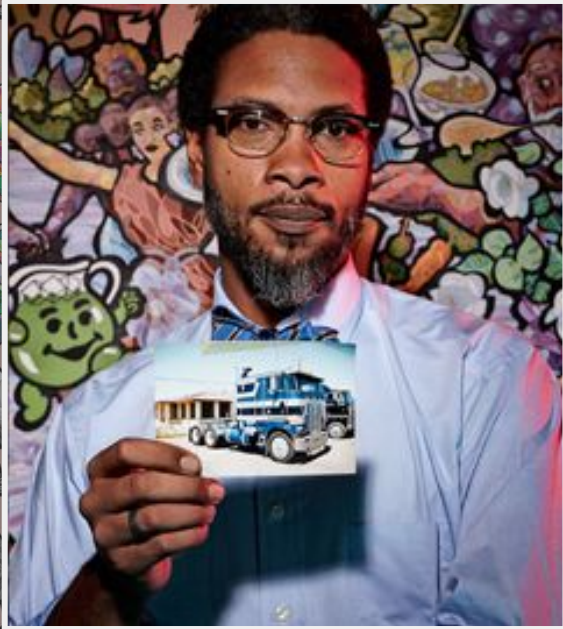
# Cultural Significance of Reginald Baylor

Reginald Baylor is an artist from Milwaukee who has grown to become a pop sensation in the modern art world. He has introduced a new and unique painting style that is reminiscent of American pop art with his own added components.

He attended the University of Wisconsin-Oshkosh and majored in sculpture but was encouraged to pursue commercial art and art education.

Not only does he present visually stunning and conceptually interesting art, but he also delves into social and cultural issues by embedding personal commentary into his work.

Baylor comes from humble beginnings and succeeds in maintaining artistic integrity. Having had worked diligently and passionately on all his projects, Baylor is now retired from painting and is focused on created his own label. Baylor intends to follow in the footsteps of well-known artists such as Roy Lichtenstein and get his name out the mainstream media.



# Analysis: *End Freeway*

Both spatially and conceptually complex, *End Freeway* represents love and being committed to ideas. In Baylor's own words, this piece is about "the American dream, what it was and what it's become". In this piece, Baylor focuses on the calamity and complexity of thriving relationships. Without being blatant as well as presenting scattered and disorderly figures, Baylor portrayed the beautiful yet flawed qualities of companionship. Diverse with rich colors, crisp lines, and interesting shapes, Baylor presents his idea in a manner that is both visually pleasing and unique to his audience.



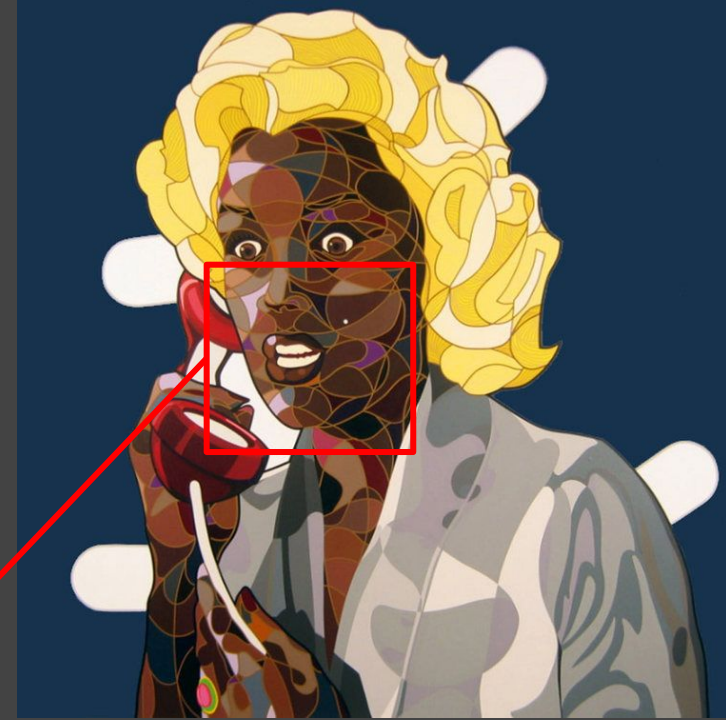
- Attention is concentrated on this point of the painting. This particular focal point exhibits great attention to detail, emphasis of movement, and creative utilization of space.

# Analysis: *Blonde and Black Paper Doll*

Baylor created this piece as an allusion to another prominent pop artist, Andy Warhol. The piece is meant to be an African American version of Marilyn Monroe. Baylor inverted skin color of Marilyn Monroe, having dark skin and a white mole in the piece as opposed to light skin and a dark mole. This piece serves as Baylor's first step into contemporary culture and art that dealt with social issues.

To Baylor, color played a key role in understanding the concepts and styles embedded in his art. Baylor cleverly and intricately tailors his artworks to follow a color scheme that is both rich and bold in presentation as well as customized to fit the purpose of the particular piece. Notably, the expression that the female subject bares is very distinctive and curious. Her disposition is used to enhance the mood present in this piece.

- Towards the outer, right corners of the face Baylor adds lighter shades to contrast the darker ones and create depth and value to the face's build.





# Formal Qualities of Reginald Baylor

There is a prominent use of unique linework occurring throughout all of Baylor's artworks. It is his signature technique which he is best known for. Baylor uses lines to create very unique patterns along the assets of his artwork. He also uses line to separate color and create depth to give the impression of a two-dimensional image. Among his works can be seen many different pop culture symbols that are seemingly random but can be combined to give the piece oneness as it relays a clamorous, passionate mood. Full of emotion and vigor attached to a main idea, Baylor's artwork is outstanding and notable for being abundant with random and scattered objects and images. Baylor is clearly very detail-oriented as evident from the great lengths he goes to create patterns in even the smallest assets as well as the important usage of color used to emphasize an aesthetic feel to his artwork. Overall, Baylor eloquently combines color, shape and linework to create marvelous and meaningful pieces that amplify emotion and relay the beauty of hardships and human endeavors.



# Compare and Contrast: Artists

<b>Reginald Baylor</b>	<b>Both</b>	<b>Roy Lichtenstein</b>
<ul style="list-style-type: none"><li>• Although Baylor's artwork possess commercialistic undertones and assets, it is not the main focus of his pieces and it doesn't account for any significant purpose</li><li>• Baylor is an African American artist whose artwork is greatly influenced by his personal culture and relations to his community</li><li>• Baylor is one of the most popular artists from Wisconsin and stands out among modern artists through his unique linework and artmaking techniques</li></ul>	<ul style="list-style-type: none"><li>• Both artists aimed to captivate their audiences by utilizing assets that are unique to their distinguished art style</li><li>• Both artists are greatly influenced by the pop culture that surrounds them and overall the culture found in America</li><li>• Both artists incorporate the likenesses of popular cartoons characters and icons</li><li>• Both artists aimed to have a strong connection to mainstream culture</li></ul>	<ul style="list-style-type: none"><li>• Acclaimed pop artist known for his emulation of comic book style displayed in his artwork</li><li>• Artwork was perceived as inadequate due to its non-traditional presentation and subject matter</li><li>• Most unique assets of his artwork were his usage of ben-day dots and speech bubbles, both traits that were commonly seen in vintage comic books</li><li>• Very experimental when it came to mediums and style</li></ul>

# Compare and Contrast: Themes

<b>Reginald Baylor</b>	<b>Both</b>	<b>Roy Lichtenstein</b>
<ul style="list-style-type: none"><li>• Artwork tends to be influenced by African American culture and culture found in urban settings</li><li>• The concept of love and relationships is explored more broadly and with more detail</li><li>• Baylor touches upon social issues through his artwork</li><li>• Baylor looks at the relationship between color and meaning from a more critical view</li></ul>	<ul style="list-style-type: none"><li>• Artwork is influenced by the culture that surrounded each artists at the time a piece was made</li><li>• A common emotion or concept that was depicted in both artists work was love and romance</li><li>• Both artists strived to relay universal themes in a stylish and personal way through their artwork</li></ul>	<ul style="list-style-type: none"><li>• Artwork focuses on the commercial aspect of American culture as Lichtenstein often depicted scenes from the media</li><li>• Love and romance is depicted in a pictorial and exaggerated manner</li><li>• Lichtenstein's intent is to heighten his audiences expectations of technique and skill by recreating scenes from popular culture at the time</li></ul>

# Compare and Contrast: Formal Qualities

<b>Reginald Baylor</b>	<b>Both</b>	<b>Roy Lichtenstein</b>
<ul style="list-style-type: none"><li>• Broad range of colorization and hues incorporated in each piece</li><li>• Linework is intricate and cunning and is used to create distinctive stylization</li><li>• Subjects in artwork are typically African American or female</li><li>• Complex geometric shapes along backgrounds and in other assets</li><li>• Often has a main and secondary focal point in his pieces</li></ul>	<ul style="list-style-type: none"><li>• Incorporate color palettes that are vibrant and eye catching</li><li>• Linework is used to create texture and separate hues</li><li>• Subjects are often females with exaggerated facial expressions used to emphasize a central idea or emotion</li><li>• Incorporate iconic characters that are recognizable from pop culture</li><li>• Present similar aesthetics with distinguishable characteristics from different eras</li></ul>	<ul style="list-style-type: none"><li>• Mainly utilized primary colors</li><li>• Linework is very bold and consistent throughout his artwork as it is reminiscent of comic book stylization</li><li>• Subjects were often beautiful females in melodramatic situations</li><li>• Not much significant detail outside of the main subject and focal point</li><li>• Focal point tends to stay within the center with symmetrical balance</li></ul>

# Compare and Contrast: Artwork

## Lichtenstein's *Look Mickey*

- Only uses primary colors
- Subject matter is simple and conceptual qualities are not very excelled
- The incorporation of popular culture is more apparent in this piece
- There is more space and idle sections in this piece
  - Use of lines and repetition is less significant to the overall piece

## Baylor's *End Freeway*

- Uses various colors (Mostly yellow, green and blue)
  - Subject matter is more intricate and conceptual qualities are personal and engaging
  - Incorporation of popular culture is more subtle and less of a central focus in the piece
  - Outstanding linework used to create depth and patterns
- Both incorporate pop culture and cartoons
  - Influenced by American pop culture
  - Vibrant colors

# Compare and Contrast: Artwork

## Lichtenstein's *Oh Jeff I Love you Too But*

- Lichtenstein exhibits his iconic ben-day dots along with a speech bubble for added dialogue
- Color scheme is simple, consisting of mainly primary colors with rich hues
- Lines are thick and bold and are used to create texture and detail in the hair
- The female subject in this particular piece is wearing a worried facial expression
- Obvious connections to comic book scenes

## Baylor's *Black and Blonde Paper Doll*

- Baylor uses his iconic, complex and intricate linework to separate colors
- Hues vary to create depth and value in the woman's skin tone
- Lines are thin and flow together subtly as to not invoke too much movement and create patterns
- Female subject is African American and wears a surprised or shocked facial expression
- Obvious inspiration drawn from the likeness of Marilyn Monroe

- Themes of love and relationships
- Subjects are females
- Similar color schemes
- Significant attentiveness to linework



It is notable in my own artwork that I gain inspiration from artists such as Reginald Baylor and Roy Lichtenstein. Relating to themes and even using similar assets to enhance the quality of my artwork. While some of my work served as means to attempt to emulate the style presented by a particular artist, often times when I utilized my own developed style I found my techniques and designs resembling those of one or more specific artist. In this way, my artwork sometimes does not take direct inspiration from certain artists, but still manages to bare resemblance in essence.

## Connections to Own Art

As my artwork progressively got more conceptually complex, so did my style. Much like the artwork created by my favorite and most inspiring artists, my ideas were very scattered, but combined together to create the likeness or oneness of a main idea or emotion. This dynamic is present in the artwork of Reginald Baylor. It is important to me to make sure that all of my artwork, no matter how intricate or simple it may be, serves a purpose and evokes a prominent emotion that is conveyed tastefully and uniquely. Overall, my artwork serves to showcase my growth as an artist and the influence that other artists have had on me.





# Connections to Own Art: Reginald Baylor

Although Reginald Baylor did not serve as a direct inspiration for this piece, it's style and composition bares similarities with some of Baylor's artwork. Specifically, *Black and Blonde Paper Doll*. In this piece titled, *Seeing Through Time's Lenses*, the concept of time and changes in modern youth culture are presented through the likeness and appearance of a young girl with a flamboyant and aesthetically pleasing appearance. In *Black and Blue Paper Doll*, the subject is an African American female who bares a resemblance with Marilyn Monroe.

Baylor intended for his piece, *Black and Blonde Paper Doll*, to serve as social commentary on beauty standards for African American Women and their presentation in mainstream media. Similarly my piece is meant to be a personal expression of my opinions on my generation's culture and how it invokes changes in teen's appearances through beauty trends. Regarding format and color, both pieces include vibrant, eye catching colors with great amounts of neutral shades to contrast them. Attention to detail is also evident in both pieces through small details and specific allocations of seemingly random colors.







# Connections to Own Art: Roy Lichtenstein



Roy Lichtenstein serves as an obvious inspiration for this specific piece that I created titled *Sweethearts*. The piece itself is meant to be reminiscent of Roy Lichtenstein's artworks that display couples appearing to be from scenes found in vintage comic books embracing each other. I decided to add a modern twist to that idea by making the couple a same sex couple. Stylistically, my piece is meant to emulate the appearances of the females that are painted by Lichtenstein as evident from the dramatic expressions and similar facial features. Other stylistic choices that I made in order to further emulate Lichtenstein's designs were using line to create details and texture specifically for the hair. While the medium I chose to create this piece did not allow me to re-create the essential ben day dots that unique are to Lichtenstein's iconic style, I do believe I achieved in conveying a similar essence and tone.

# Compare and Contrast: Artwork

## Seeing Through Times Lenses

- Subject is a young female with pale skin and blue hair
- Broad range of colorization used as a background and found in smaller details
- Distinctive stylistic choices that reflect personal expression
- Medium is a combination of physical materials and acrylic canvas painting
- Deals with concepts of time affecting youth culture and one's personal style

## Baylor's Black and Blonde Paper Doll

- Colors are essential to functionality of piece
- Female subjects
- Personal tie to the piece
- Significant attention to detail
- Subject is a young African American female whose appearance resembles Marilyn Monroe
- Neutral colors with brighter hues used to accentuate
- Distinctive stylistic choice that reflects the artist's personal investment with social issues
- Medium is acrylic canvas painting
- Deals with concepts relating to social issues and reversed roles

# Compare and Contrast: Artwork

## Sweethearts

- Subjects are two females in a warm embrace with each other
- Evoke warmth and romantic vibes
- Linework and pattern is used to create texture and value in the hair
- Colorless, consisting of only black ink
- Medium is relief ink and linoleum (Block Print)
- Themes of love and relationships, specifically that of a same-sex couple
- Meant to be a personalized emulation of Lichtenstein's artwork

## Lichtenstein's Oh Jeff I Love you Too But

- Subject is a singular female with a melancholy and wistful facial disposition
- Sad, romantic tone created by the situational art piece
- Mainly primary colors are used
- Medium is oil painting on canvas
- Themes of love, relationship troubles and longing
- Serves as a depiction of a female in a melodramatic, comic book styled situation

- Meant to be unique in presentation

- Similar style of depicting the female appearance

- Melodramatic dispositions from subjects



# Reflection of Technical and Conceptual Qualities of Own Art



My goal when creating art is to make both the conceptual and technical qualities be equally important. This aspect of my artmaking process is inspired more by the works of Reginald Baylor who creates visually stunning pieces that relay a deep, personal meaning. The technical qualities of my art relate more to Roy Lichtenstein's art in the way that it's formatted as well as the stylization. Though the stylization presented in my artwork is unique to my own skill and cultural influence, assets of both Baylor and Lichtenstein's artwork are reflected in the visuals of my work. Aside from visually resembling the works of the artists, my artwork is also similar in the way that it attempts to express a main idea or emotion supported by other underlying themes. Lichtenstein and Baylor are able to relay stories and scenes that capture certain emotions and unravel relatable themes. My artwork is meant to function in a similar manner as it's intricate visuals allow for a greater elaboration of themes and a deeper meaning to be investigated. Sometimes the meaning behind my artwork can have a personal connection to my own life and express an idea that is unique to my own life experiences but overall the interpretation is always open to the audience's perception as is in the artworks of Baylor and Lichtenstein.